



## CONTENTS

Programme Ski School Serfaus	p. 2
Programme Ski School Fiss-Ladis	p. 3
More activities	p. 4
Attractions	p. 4
APPsolute mySFL	p. 5
Events	p. 6-7
General information	p. 7-8
Contacts & opening times	p. 8



### Nightflow in Fiss

**Tuesday, 12.03.2024 from 5.45pm**

This year's show revolves around the eagle. Experience the show „The Eagle Returns“ directly on the slopes of the Möseralm. Cool dancers, daredevil acrobats and our snow sports instructors from the Ski School Fiss-Ladis will make the Nightflow Arena shake, rattle and roll! Let us spoil you with culinary delights in the Möseralm restaurant or in the Nightflow VIP Lounge. Further information on p. 6.



### Adventure Night in Serfaus

**Wednesday, 13.03.2024 from 6pm**

An unforgettable experience for the whole family! Impressive snow & show acts as well as a first-class ski show by the Serfaus ski school will make your heart beat faster. A combination of acrobatic jumps, precise choreography and extraordinary light effects. The show starts at 9.00 pm at the Komperdell middle station. Further information on p. 6.



### Marktdorf - market village in Ladis

**Thursday, 14.03.2024 from 4pm to 9pm**

Traditional delicacies and local handicrafts await you. Take the opportunity to purchase one or two lovingly made souvenirs to take home. There are many regional delicacies to delight the palate. Further information on p. 7.



# WEEKLY PROGRAMME.

09.03.2024 – 15.03.2024

WE ARE FAMILY.®

# SERFAUS. Ski School Programme.

09.03.2024 – 15.03.2024

**Private lessons** full- and half-day (one to six hours) are available daily upon request.  
Ski tours, cross-country skiing, snowshoe hiking and telemark on request.

## Opening times of the Serfaus Ski School Offices:

<b>S1-Center</b> (Main office; at the cable car bottom station)	Su - Fr: 8am - 5pm Sa: 8am - 6pm
<b>Komperdell</b> (top station)	Mo - Fr: 8.30am - 2pm

## Serfaus Ski School

Dorfbahnstrasse 79, 6534 Serfaus  
Tel. +43/5476/6268-0  
info@skischule-serfaus.com  
www.skischule-serfaus.com

Subject to changes.

## SATURDAY, 09.03.2024

Private lessons available by appointment (one to six hours).

## DAILY FROM SUNDAY TO FRIDAY

7am - 7.30am	Murmli learns to ski! Daily cartoon series on Ski School TV!
9am	Perfect Start Private lessons
11am	Comfort Start Private lessons
12.30pm	Food and experience at the restaurants Starrest and Murmlirest
12noon - 12.30pm	Murmli learns to ski! Daily cartoon series on Ski School TV!
1.15pm	Cross country skiing lessons half-day (Komperdell 2,000 m)
From 1.15pm	Start private lessons
1.30pm	Snowshoe hiking tour or Funsport Day (2 hours)
6pm - 6.30pm	Murmli learns to ski! Daily cartoon series on Ski School TV!

## SUNDAY, 10.03.2024

From 10am	Main allocation to groups at the flags at Komperdell 2,000 m
From 2.15pm	Animation: Murmli is dancing with everyone at the Kinderschneealm

## MONDAY, 11.03.2024

From 10am	New allocation for group lessons children, youth and adults alpine advanced
From 2.15pm	Animation: Murmli is dancing with everyone at the Kinderschneealm

## TUESDAY, 12.03.2024

From 2.15pm	Animation: Murmli is dancing with everyone at the Kinderschneealm
-------------	---

## WEDNESDAY, 13.03.2024

From 10.30am	Beginning group course beginners snowboard and beginners adults alpine
From 2.15pm	Animation: Murmli is dancing with everyone at the Kinderschneealm
9pm	Adventure Night – „Reflection“ at the Komperdell top station

## THURSDAY, 14.03.2024

From 2.15pm	Animation: Murmli is dancing with everyone at the Kinderschneealm
-------------	---

## FRIDAY, 15.03.2024

From 10.30am	Race day: ski race for all groups
From 1.30pm	Award ceremony for all groups at the meeting point

## Possible times for group courses:

10.30am - 12.30am & 13.30pm - 3.30pm

# FISS-LADIS. Ski School Programme.

09.03.2024 – 15.03.2024

**Private courses** by prior arrangement.

## **Fiss-Ladis Ski School**

Seilbahnstraße 40, 6533 Fiss

Tel. +43/5476/6757

skischule@fiss-ladis.at

www.skischule-fiss-ladis.at

## **Opening times of the Fiss-Ladis Ski School Offices:**

**Office in Fiss** daily from 8.30am - 5pm

**Office in Ladis** Mo - Fr: 8.30am - 10.30am & 3pm - 5pm  
Sa & Su: 8.30am - 12noon & 1pm - 5pm

**Bertas Kindervilla** Su - Fr: 9.45am - 12.15pm & 1.15pm - 3.45pm

Subject to changes.

## **SATURDAY, 09.03.2024**

Private courses by appointment

## **SUNDAY 10.03.2024**

10am	Start group course children (K1) meeting place Kinderland Start group course children (K2) meeting place Sonnenbahn mid station Start group course children (K3-K9) meeting place Fiss blue cable car or meeting place Sonnenbahn mid station (K2-K6) Start of group course snowboard - beginners SP Boarderclub Start of group course adults - beginners SP Fiss roof of the ski school or SP Sonnenbahn mid station
10.30am	Bambiniland „Hello“ in front of Berta's Kindervilla - Info and getting to know for 3 year old kids
2.30pm	Berta's book of nonsense in Berta's Kinderland

## **MONDAY 11.03.2024**

10am	Start of group course children (Bambini, K1) meeting place Kinderland Start of group course children (K2) meeting place Sonnenbahn mid station Start group course children (K3-K9) meeting place Fiss blue cable car or meeting place Sonnenbahn mid station (K2-K6) Start of group course snowboard - all standards TP Boarderclub Start of group course adults - beginners SP Fiss roof of the ski school or SP Sonnenbahn mid station Start of group course adults -Standards E3-E7 assembly point Fiss roof of the ski school
11am	Magic break in Berta's Kindervilla
1.30pm	Snowshoe afternoon hike in the forest and meadow area (Reservation at the Ski School office required)
2.30pm	Simsalabim in Berta's Kinderland

## **TUESDAY, 12.03.2024**

9am	Adventure ski tour Urgtal (Reservation at the Ski School office required)
11am	Bambini Party mit Berta in Bertas Kinderland
1.30pm	Toboggan introduction
2.30pm	Dino party at Berta's Kinderland
8.30pm	Nightflow - The eagle returns. Ski show on the Möseralm

## **WEDNESDAY, 13.03.2024**

9am	Piste ski tour for beginners (Reservation at the Ski School office required)
9am	Freeride Dayride (Reservation at the Ski School office required)
10am	Snowshoe Panorama Hike (Reservation at the Ski School office required)
10am	Start of group course children K1 and Bambini in Berta's Kinderland
11am	Puppet theatre at Berta's Kindervilla
2.30pm	Puppet theatre at Berta's Kinderland

## **THURSDAY, 14.03.2024**

9am	Samnauntour (Reservation at the Ski School office required)
10am	Snowboarding special course - 2 day course for beginners (Reservation at the Ski School office required)
10am	Skiing special course - 2 day course for adult beginners (Reservation at the Ski School office required)
11am	Fairy godmother in Berta's Kindervilla
2.15pm	Indian break in the Indian village

## **FRIDAY, 15.03.2024**

10am	Ski race for all children groups at the Poschilift
1.30pm	Award ceremony of the ski race at Berta's Kindervilla

# SERFAUS-FISS-LADIS. More activities.

09.03.2024 – 15.03.2024

## WINTER HIKING , SNOWSHOE HIKING & CROSS-COUNTRY SKIING

Skiing is not the only sport you can do in winter. Prepared winter hiking trails and cross-country skiing trails as well as signposted snowshoe hiking routes await you in Serfaus-Fiss-Ladis. The ski schools in Serfaus-Fiss-Ladis offer guided snowshoe hiking tours and cross-country skiing courses for beginners to advanced skiers on request. A brochure with all the trails and cross-country ski runs is available for you free of charge in our information offices!

## TOBBOGANING

Serfaus Toboggan run from Alpkopf / Komperdell to the bottom station in Serfaus.

Fiss Toboggan run from Steinegg via the Kuh Alm to the Schönjochbahn bottom station in Fiss.

## SKI TOURS

Ski tour equipment is available at the sports shops. The ski schools in Serfaus-Fiss-Ladis offer guided ski tours.

## HORSE CARRIAGE RIDES

Horse carriage rides possible on request.

Fiss Clemens Salner, Sunday to Friday. Information and reservation on tel. +43/664/5534253

## ALPACA WALK

On request, limited number of participants.

Serfaus Elisabeth and Michele, every Monday, Wednesday & Friday at 3pm. Information and reservation on tel. +43/699/19600096.

## PANORAMA TANDEM FLIGHTS OVER THE SUNNY PLATEAU

The most beautiful, safest and easiest way to fly. Enjoy a unique experience in Tyrol's mountains as a passenger. Flights are available daily. Info & registration: Panorama Flüge Tirol, Roland Patsch, tel. +43/650/3982773, tandemfliegen@aon.at, [www.tandemfliegen-tirol.com](http://www.tandemfliegen-tirol.com)

## WELLNESS OFFERS

Let yourself be pampered, relax with a massage and really unwind - some of our hotels offer all this.

You can find more detailed information on our website at [www.serfaus-fiss-ladis.at/en/Villages-region/From-A-Z](http://www.serfaus-fiss-ladis.at/en/Villages-region/From-A-Z)

## Attractions in Serfaus-Fiss-Ladis



### Lots of action besides skiing.

Serfauser Sauser

Wednesday, Thursday and Friday in the afternoon (with prior reservation)

Indoor playground and climbing paradise Play<sup>IN</sup> Serfaus

Sunday, Monday and Tuesday from 1pm to 7.30pm

Fisser Flieger & Skyswing at the Möseralm in Fiss

Thursday to Saturday from 1pm to 4pm

**For more information on off-piste activities, please visit our website.**

Simply scan the QR code!

[www.serfaus-fiss-ladis.at/en/Winter-holiday/Winter-activities](http://www.serfaus-fiss-ladis.at/en/Winter-holiday/Winter-activities)





APPsolute  
**mySFL**



● **PERSONAL HOLIDAY COMPANION**

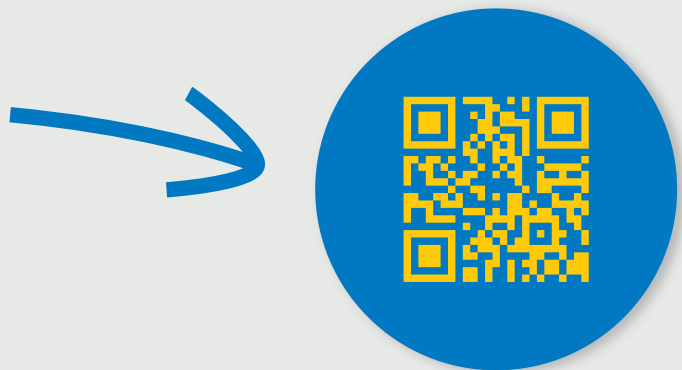
Interactive map  
Ticket- & vouchershop  
Event tickets  
Interactive adventure trails

● **LIVE-INFORMATIONEN**

Up-to-date info about opening hours,  
weather, webcams, upcoming events  
and much more.

● **PUSH-MESSAGES**

With push messages we keep you  
up to date with important information.



*Download now*

# SERFAUS-FISS-LADIS. Events.

09.03.2024 – 15.03.2024

## MONDAY, 11.03.2024

SERFAUS

### 11.30am Masner Express

The Masner Express is an extremely comfortable way to reach the magnificent winter landscape of the Masner area without having to strap on your skis or snowboard. Reservation at the Serfaus cable car ticket office, tel. +43/5476/6203.

### 8pm Introduction to Heart Meditation with Hartmut Hammerle at Haus Begegnung

Energy balance: 12 €. Registration directly with Hartmut, Tel. +43/676/842927700.

### 8.15pm Theatre performance „Männergrippe - Lebst du noch oder stirbst du schon?“.

At the Kulturzentrum Serfaus. Price: adults € 14, children € 8. Tickets available online: [www.theater-serfaus.com](http://www.theater-serfaus.com)

LADIS

### 8pm Theatre performance „Heiße Bräute machen Beute“ by the Ladis Theatre Group

At the KVZ Rechelerhaus in Ladis. Price: adults € 12, children € 6. Reservations on tel. +43/699/10826857.

## TUESDAY, 12.03.2024

SERFAUS

### 4pm Sunset Dinner Masner

During the sunset in the Monte Mare Restaurant, you can get into your cosy hut slippers and enjoy the and enjoy the delicacies that will be served. Definitely an unforgettable experience.

Registration at the Komperdell cable car ticket office, tel. +43/5476/6203.

### 8pm Guest concert by the Wilten Music Band at the Serfaus Cultural Centre - admission free.

FISS

### 3pm - 6pm Museum s'Paules und s'Seppls House in Fiss

Get to know the history of the stately Oberinntaler Durchfahrthshof and experience a very special atmosphere. experience. Cribs exhibition. Please bring along warm clothes. Price: adults: € 4,50. children up to 7 years € 2.

### 5.45pm - 10pm Nightflow – „The Eagle Returns“

This year's show revolves around the eagle. Experience the show „The Eagle Returns“ directly on the slopes of the Möseralm. Cool dancers, daredevil acrobats and our snow sports instructors from the Ski School Fiss-Ladis will make the Nightflow Arena shake, rattle and roll! Let us spoil you with culinary delights in the Möseralm restaurant or in the Nightflow VIP Lounge. Night skiing, Möseralm and Sonnenbahn lifts in operation from 5.45pm - 10pm.

## WEDNESDAY, 13.03.2024

SERFAUS-FISS-LADIS

### 7.30am The First Track – Decorate the mountain with your “First Track” before anyone else has the chance!

All you have to do is get up early. Because at 7.30am the first cable cars in Serfaus-Fiss-Ladis start to whirr their way up to a snowy paradise. Guided tour with exclusive mountain breakfast.

Reservation at the Serfaus-Fiss-Ladis cable car ticket offices essential.

SERFAUS

### 11.30am Masner Express

The Masner Express is an extremely comfortable way to reach the magnificent winter landscape of the Masner area without having to strap on your skis or snowboard. Reservation at the Serfaus cable car ticket office, tel. +43/5476/6203.

### 6pm - 11pm Adventure Night – „Reflection“

Impressive snow and show acts as well as a first-class ski show from the Serfaus ski school will make your heart beat faster with their daring stunts and elegant moves. The combination of acrobatic jumps, precise choreography and impressive light effects will transport you to another world. The show starts at 9pm at the Komperdell top station. Tobogganing evening and night skiing from 6pm - 11pm (last ascent 10.30pm).

FISS

### 3pm - 6pm Museum s'Paules und s'Seppls House in Fiss

Get to know the history of the stately Oberinntaler Durchfahrthshof and experience a very special atmosphere. experience. Cribs exhibition. Please bring along warm clothes. Price: adults: € 4,50. children up to 7 years € 2.

### 3.30pm - 5.30pm Gallery at the church square opened

LADIS

### 4pm - 5pm Bread baking at KVZ Rechelerhaus

There will be fresh bread from the wood-fired oven and sweet pastries at the stall in front of the Rechelerhaus.

## THURSDAY, 14.03.2024

SERFAUS-FISS-LADIS

### 1pm Behind the scenes

What actually happens behind the scenes at the cable car stations and how do the cable cars actually work?

In the Serfaus-Fiss-Ladis region you can learn these secrets and many more. Guided tour around the piste preparation machine workshop of the cable car companies. Duration: approx. 3 hours. Meeting point: 1pm Komperdell bottom station and main ticket office Fiss. Reservation at the Serfaus-Fiss-Ladis cable car ticket offices essential.

# SERFAUS-FISS-LADIS. Events.

09.03.2024 – 15.03.2024

THURSDAY, 14.03.2024

SERFAUS

## Sunrise Hexensee

The early bird gets the worm! Early in the morning we take the Masner Express up to the Hexenseehütte. A rich mountain breakfast awaits you at the hotel. Departure time individually, depending on the season. Registration at the Komperdell cable car ticket office, tel. +43/5476/6203.

## 11.30am Masner Express

The Masner Express is an extremely comfortable way to reach the magnificent winter landscape of the Masner area without having to strap on your skis or snowboard. Reservation at the Serfaus cable car ticket office, tel. +43/5476/6203.

## 8pm Introduction to Heart Meditation with Hartmut Hammerle at Haus Begegnung

Energy balance: 12 €. Registration directly with Hartmut, Tel. +43/676/842927700.

FISS

## 3.30pm - 5.30pm Gallery at the church square opened

## 5.45pm - 9.30pm Toboggan evening & Kids Night

The fun-filled toboggan evening, which takes place on the Witches' toboggan run (mid station of the Schönjochbahn via the Sonnenburg to Fiss). The Kids Night takes place in Berta's Kinderland. The little ones can test various fun sports equipment on the slopes. Fondue evening and Pizza Dome on advance reservation in the Sonnenburg family restaurant. During dinner, the children are in good hands in the popular Kids-Loft. Of course, Berta will also pay a visit and a magician will not only amaze the children.

LADIS

## 4pm - 9pm Marktdorf – market village at the Ladis castle pond

Traditional delicacies and local handicrafts await you. Take the opportunity to purchase one or two lovingly made souvenirs to take home. There are many regional delicacies to delight the palate. Enjoy a cosy meeting place with mulled wine, punch and lots of music below the mighty Laudeck Castle for a romantic end to a great winter's day.

## DAILY BY APPOINTMENT

SERFAUS-FISS-LADIS

## Pistenbully Tour

If you have always been fascinated by the way the Pistenbullies dance powerfully yet virtuously over the snow slopes, then you can now reserve a box seat directly on the 520 hp and 9 tonne grooming machines.

Maximum one adult and one child (up to 10 years or 1.30 metres).

Meeting point Serfaus: 4.15pm Panoramarestaurant, Komperdell middle station.

Meeting point Fiss: 4.45pm at the Pistenbully meeting cube at the Schönjochbahn valley station.

Timely registration at the ticket office of the mountain railways is absolutely necessary.

SERFAUS

## Igloo Experience Day - Snow is a quick-change artist

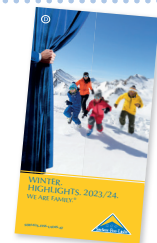
Together we build an igloo under the guidance of a professional. Equipped with snow shovels, probes and snow saws, we go to a previously explored spot where we build our igloo. For sporty groups and families with small children.

Takes place in all weathers. Duration: approx. 5 hours. Meeting point: at the Serfaus information office or by arrangement.

Further information and registration with Astrid Walser, Tel. +43/676/6256127.

For more information on attractions, activities and culinary offers, see our brochure „Highlights. 2023/24.“!

Available in all Serfaus-Fiss-Ladis Information Offices.



Further information to the events can be found in the event schedule on our website.

Simply scan the QR code!



## USEFUL INFO

### Important telephone numbers:

#### Info Offices of the Tourism Board Serfaus-Fiss-Ladis

Tel. +43/5476/6239

#### Serfaus cable car ticket office

Tel. +43/5476/6203

#### Fiss-Ladis cable car ticket office

Tel. +43/5476/6396

#### Ski School Serfaus

Tel. +43/5476/6268

#### Ski School Fiss-Ladis

Tel. +43/5476/6757

#### SFL Taxi

Tel. +43/5472/20720

#### Engelbert's Taxi

Tel. +43/664/3569380

#### Taxi Adlerhorst (Madatschen)

Tel. +43/664/9496977

### Opening times. Serfaus-Fiss-Ladis.

restaurants &  
cafés:



shops &  
service providers:



### Opening times Info Offices of the Tourism Board Serfaus-Fiss-Ladis

MO - FR: 8am - 12noon & 1pm - 5pm | SA: 9am - 1pm  
SU & bank holidays: 9am - 1pm (Info Office Ladis closed)

### Opening times of the cable car ticket offices

#### Serfaus

Bottom station:

daily from 8am - 4.45pm (SA: 8am - 6pm)  
for night skiing and tobogganing (WE): until 9.30pm

#### Fiss

Bottom station:

daily from 8am - 4.30pm (SA: 8am - 7pm)  
for night skiing and tobogganing (TU): until 8.45 pm

Waldbahn:

MO - TH: 8am - 4.30pm | FR - SU: 8am - 5pm

#### Ladis

Bottom station:

from 8am - 4.30pm

### Opening times of the general practitioners (doctors)

#### Serfaus

MED SERFAUS

Dr. Adolf Köhle

Tel. +43/5476/53000

MO - FR: 8.30am - 11.30am & 2pm - 4.30pm

SA, SU & bank holidays: 10am - 5pm

#### Fiss

FISSMED

Dr. Christoph Stengg

Tel. +43/5476/20144

MO - FR: 9.30am - 5.30pm

SA, SU & bank holidays: 10am - 5pm

Dr. Robert Stefan

Tel. +43/5476/60660

MO, TU, TH & FR: 8am - 11.30am

MO & WE: 3pm - 6pm

The information has been compiled with great care. Changes are always possible.  
However, they not the responsibility of the publisher. Errors, mistakes and changes reserved.

# WE ARE FAMILY.®

JOIN THE SFL FAMILY



SERFAUS-FISS-LADIS.AT



Österreich

